



MEDWAVE

SOFTSHOCK

MEDRAY-AW



- **Unique, non-invasive solution**
- **3-4 treatments needed at weekly intervals**
- **About 10 minutes for each treatment session**

HIGHLY EFFECTIVE PAIN TREATMENT



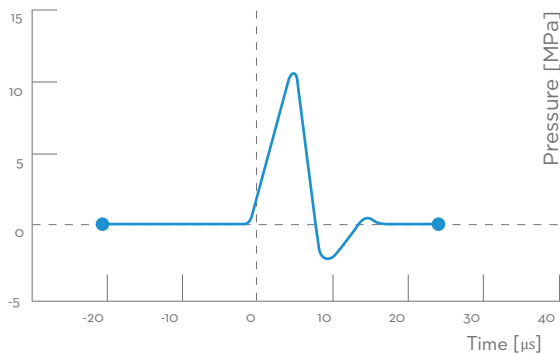
Medwave SoftShock therapy is a new non-invasive solution for chronic musculoskeletal pain. The Extracorporeal Shockwave therapy is frequently used in physiotherapy, osteology and sports medicine. Applications are mostly associated with the treatment of chronic muscular and tendon disorders, back and cervical pain.

During the therapy, a high intensity acoustic wave interacts with the tissues of the body. This leads to a cascade of beneficial effects including neovascularisation in growth, reversal of chronic inflammation, stimulation of collagen and dissolution of calcium build-up. Stimulation of these biological mechanisms creates an optimal healing environment. As the injured area is returned to normal, functionality is restored and pain is relieved.

MEDRAY-AW Medwave SoftShock is a powerful and compact shockwave system which is supplied with ergonomically shaped applicator with extremely long lifetime.

MECHANISM OF ACTION

The Medwave SoftShock uses the electromagnetic wave effect to produce a mechanical shock wave that can penetrate into human tissues, focusing on the diseased part of the body and passing through. The over focused shock wave acts on the painful part of the body to stimulate healing, tissue regeneration, and repair, thus achieving therapeutic goals.



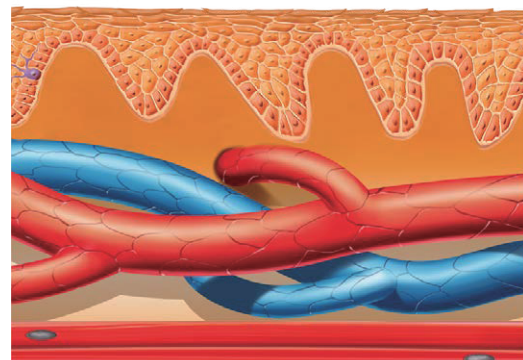
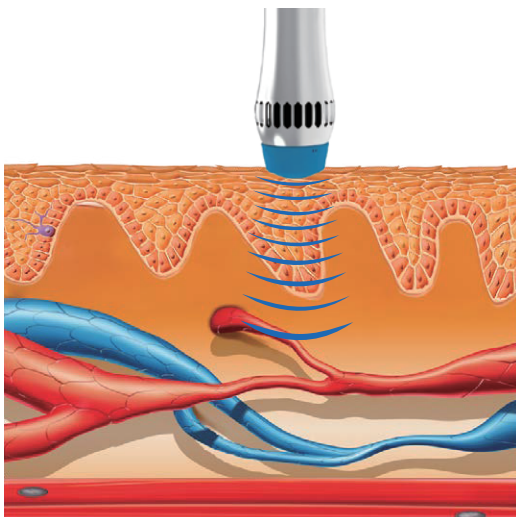
Shockwaves are characterized by jump change in pressure, high amplitude and non-periodicity.



The kinetic energy of the projectile, created by compressed air, is transferred to the transmitter at the end of the applicator.

The production of a sufficient amount of collagen is a necessary precondition for the repair processes to the damaged myoskeletal and ligamentous structures.

The SWT technology accelerates removal of nociceptive metabolites, increases oxygenation and supplies the damaged tissue with a source of energy. It supports removal of histamine, lactic acid and other irritating agents.



MEDICAL EFFECTS

DECREASE OF MUSCLE TENSION
INHIBITION OF SPASMS



- Cavitations effect
- Stimulation of stem cells
- Increase of cell wall permeability
- Dissolving of calcified fibroblasts
- Reduction of unmyelinated nerves
- Energy release at acoustic boundaries
- Enhanced the dispersion of substance P
- Stimulation of microcirculation (blood, lymph)
- Stimulation of growth factors (neogenesis of vessels, bone, collagen)
- Release of nitric oxide (vasodilatation, increased cell metabolism, anti-inflammatory effect)

MOST COMMON INDICATIONS

Indications include: painful shoulder, epicondylitis, low back pain, Achilles tendon pain, tendonitis and trigger points.



Shoulder

Rotator cuff tendinitis & calcific



Muscles

Various trigger points throughout the body



Hip

Trochanteric bursitis



Elbow

Tennis golfer's elbow



Knee

Patellar tendinitis & shin pain



Foot

Fasciitis & Achilles

MACHINE FEATURES

Portable and modern stylish, machine net wet 3KG

Adjustable pressure and frequency. pressure up to 6bars / 210mJ; frequency up to 16 Hz

Multi preset protocols for different treatment



10.1" color Touch screen, very easy to operate

Customer based Ergonomic design

Simple operation



Locating painful spots



Delivering shockwaves

SPECIFICATIONS

Product Name	Medwave SoftShock
Model No.	MEDRAY-AW
Shock wave type	Electromagnetic
Switching mode	Pedal switch
Energy	30-210mJ (1-6 BAR)
Frequency	1-16Hz
Working mode	Continuous(multi model for option)
Handle cooling mode	Air cooling
Power source	100-240VAC 50/60Hz
Input power	350W
handle lifespan	over 3,000,000 shocks
Therapeutic head	7pcs
Dimension	320*133*244mm
Weight	3kg